



**Challenges for Suriname's Air Integration  
with South America**  
The way forward

Timothy Mendonça

Workshop on Air integration - 11<sup>th</sup> of September , 2014

I.I.R.S.A. – COSIPLAN – Rio de Janeiro, Brasil



# Contents

- Suriname
- Aviation Policy
- JAPI -Airport
- Challenges of Air Integration in South Am.
- Role of Suriname within South America
  - The way forward



# Back ground

## → Suriname

- Aviation Policy
- JAPI - Airport
- Challenges
- Way forward

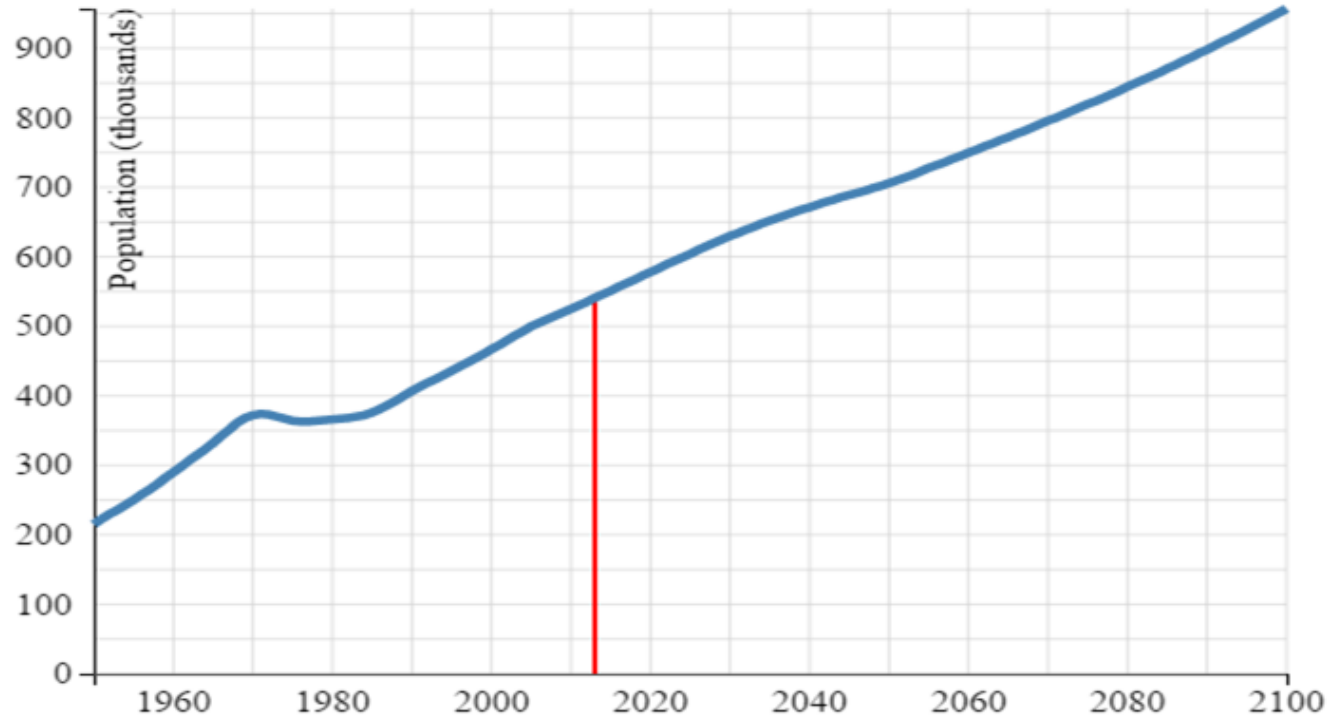
- Former Dutch Colony
- Over 540.000 Inhabitants
  - Diaspora 328.000 in The Netherlands
  - over 30.000 Brazilians
- Cultural Diversity
- Official Language Dutch,
  - 2<sup>nd</sup> Surinamese, Cultural languages
- Member of CARICOM and UNASUR





# Population Growth Forecast

- **Suriname**
- Aviation Policy
- JAPI - Airport
- Challenges
- Way forward



Source: United Nations







# Tropical Tourism

- ➔ **Suriname**
- ➔ Aviation Policy
- ➔ JAPI - Airport
- ➔ Challenges
- ➔ Way forward







# Historical City Worlds Heritage list

- ➔ **Suriname**
- ➔ Aviation Policy
- ➔ JAPI - Airport
- ➔ Challenges
- ➔ Way forward





# Aviation infrastructure

## → Suriname

- Aviation Policy
- JAPI - Airport
- Challenges
- Way forward

- Over 50 airstrips
  - All domestic air travel
  - One City Airport
- Domestic Air traffic
  - Over 60 daily domestic flights
  - Airlines private
- One International Airport





# Management Structure

- Suriname
- **Aviation Policy**
- JAPI - Airport
- Challenges
- Way forward

- Current
  - Civil Aviation Department
  - Civil Aviation Safety Department Suriname
- Internal Reorganization
  - CAA
  - Update outdated Legislation
  - ATC and Domestic airports







# Foreign Policy

- Suriname
- **Aviation Policy**
- JAPI - Airport
- Challenges
- Way forward

Change in progress

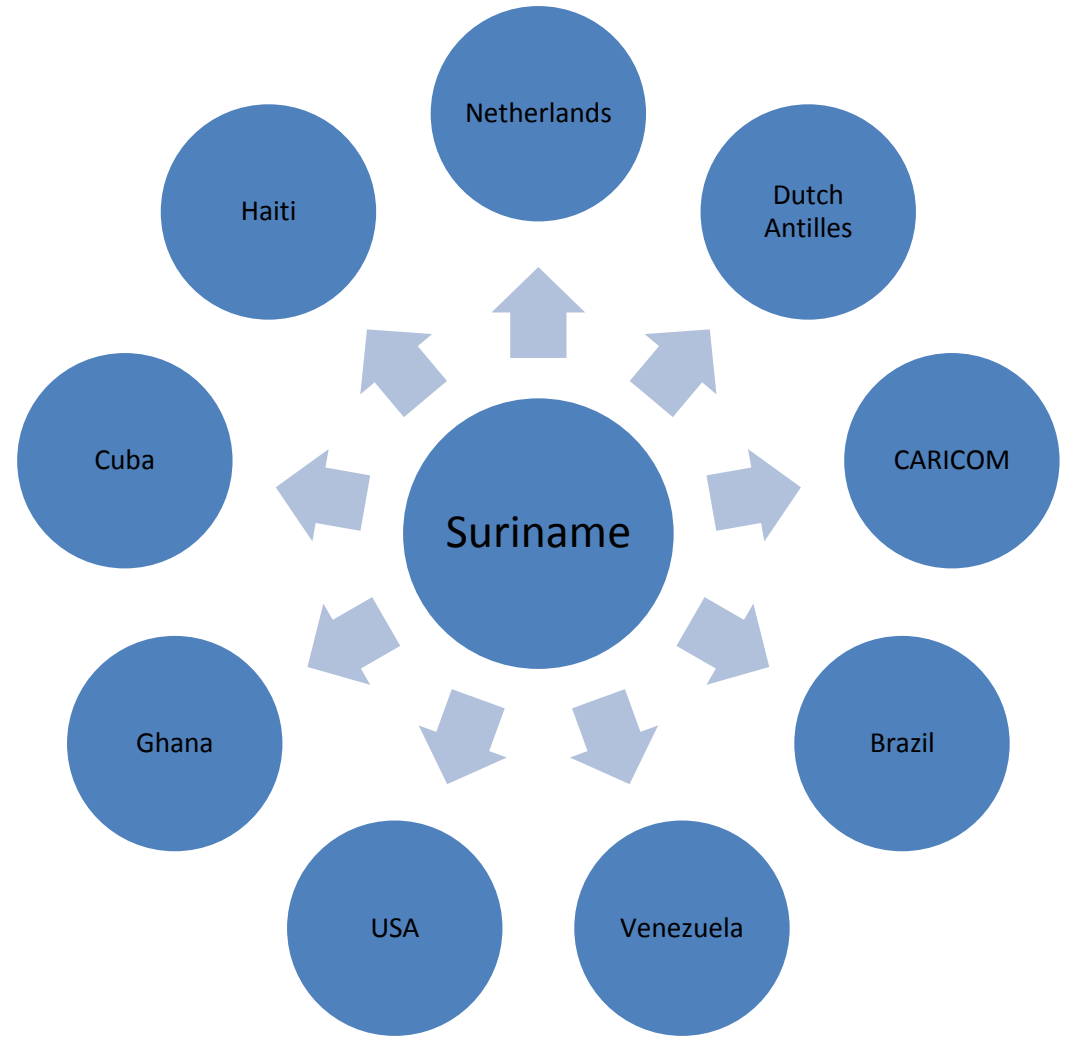
- Immigration policy
  - Tourist Card on arrival
  - Diaspora – PSA card
- Bilateral agreements
  - Up to 5<sup>th</sup> freedom right - Negotiations





# Bilateral Agreements

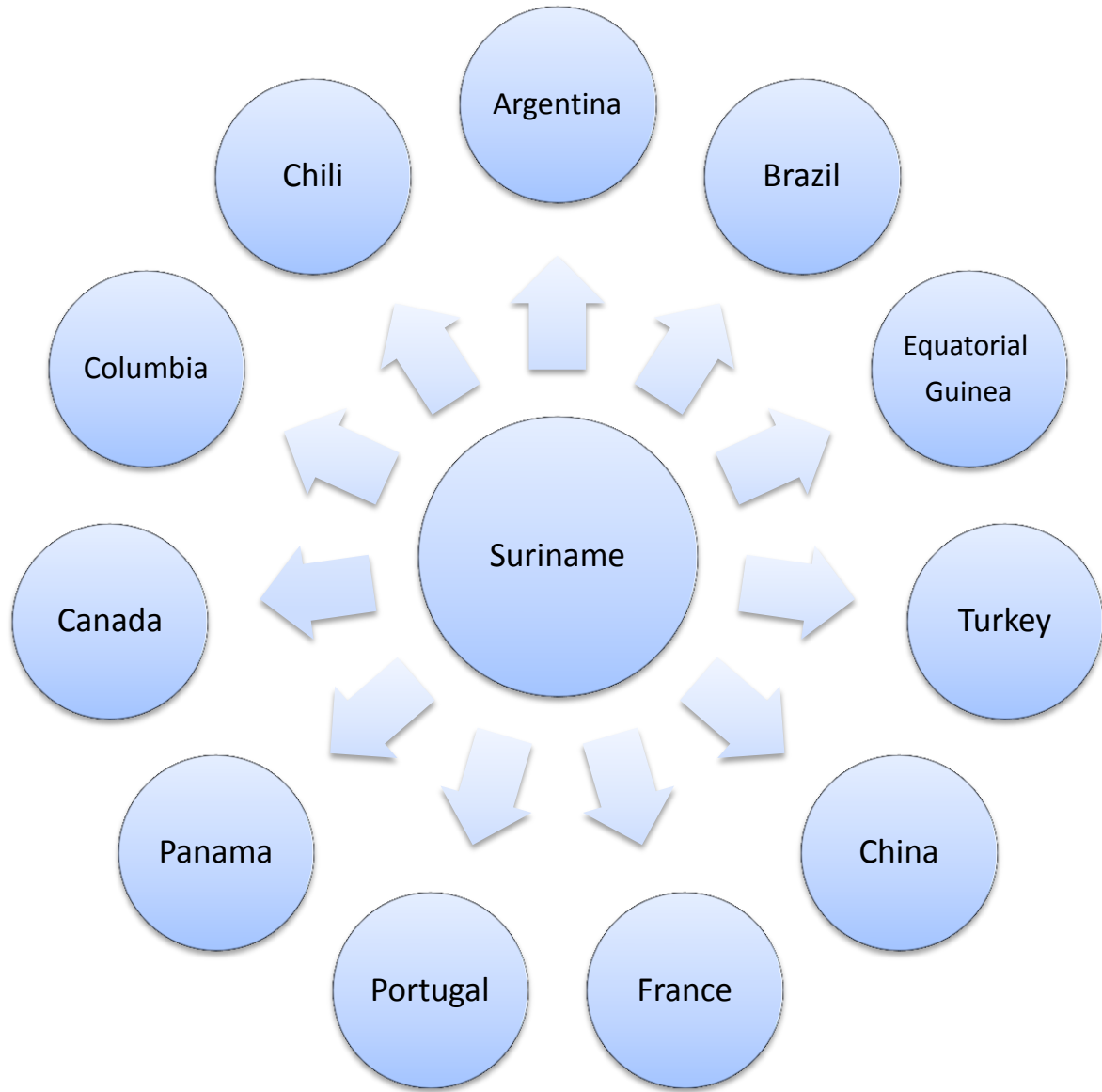
- Suriname
- **Aviation Policy**
- JAPI - Airport
- Challenges
- Way forward





# In progress

- Suriname
- **Aviation Policy**
- JAPI - Airport
- Challenges
- Way forward





# International Airport

- Suriname
- Aviation Policy
- **JAPI - Airport**
- Challenges
- Way forward



## Johan Adolf Pengel Int't Airport







# Airport Specifics

- Suriname
- Aviation Policy
- **JAPI - Airport**
- Challenges
- Way forward

- Category 4E Airport:
  - Runway Length 3480 m (excl. R.E.S.A. zone)
  - Runway Width 45 m
- Apron 7 parking stands (3 narrow body)
- Category 1 ILS – RWY11
- VOR DME
- ARFF – Category 9
- 24/7 operations
- Attractive Fueling Prices





# Capability

- Suriname
- Aviation Policy
- **JAPI - Airport**
- Challenges
- Way forward





# Infrastructural Upgrades

- Suriname
- Aviation Policy
- **JAPI - Airport**
- Challenges
- Way forward







# Planned Development

- Suriname
- Aviation Policy
- **JAPI - Airport**
- Role in S.A.
- Challenges
- Way forward







# Future planning

- Suriname
- Aviation Policy
- **JAPI - Airport**
- Role in S.A.
- Challenges
- Way forward





Air Integration

Suriname

South America

# Current Routes

- Suriname
- Aviation Policy
- **JAPI - Airport**
- Challenges
- Way forward





# PAX Scheduled Airlines

- ➔ Suriname
- ➔ Aviation Policy
- ➔ JAPI - Airport
- ➔ Challenges
- ➔ Way forward

<u>Airline</u>	<u>A/C Type</u>	<u>Destinations/ Week</u>
		<b>Curaçao (3x)</b>
		<b>Port of Spain (4x) / (5x)</b>
		<b>Aruba (3x) / Miami (5x), Port of Spain (3x) / Cur (3x), Belem (4x) / Geo &amp; Cay (2)</b>
		<b>Amsterdam (4x) / (5x)</b>
		<b>Amsterdam (3x)</b>





# Cargo Airlines

- Suriname
- Aviation Policy
- **JAPI - Airport**
- Challenges
- Way forward



**To: Port of Spain (1x) /  
Miami (1x)**



**To: Miami (2x)**

*Cargo to Amsterdam on PAX airlines*



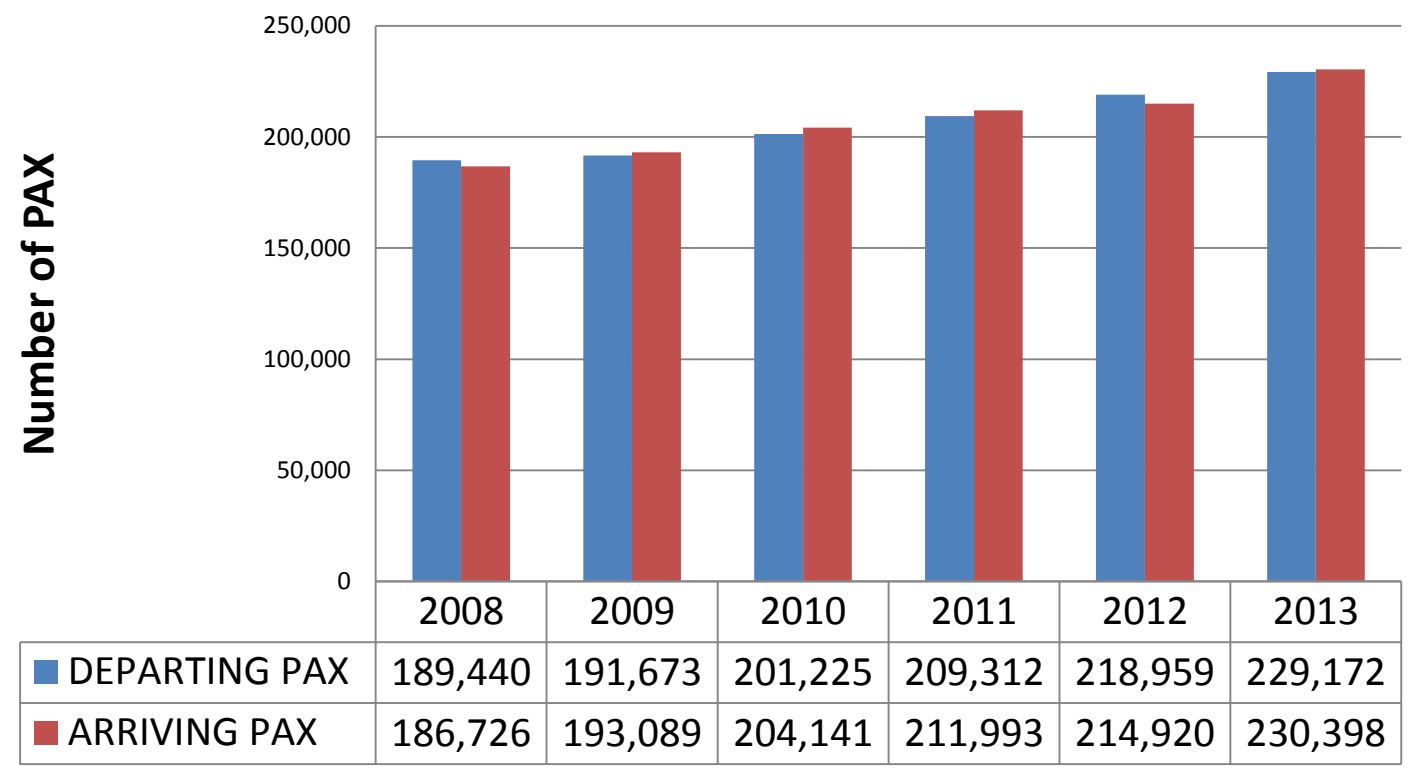




# Pax Statistics

- Suriname
- Aviation Policy
- **JAPI - Airport**
- Challenges
- Way forward

## Annual International PAX





# Pax Forecast

- Suriname
- Aviation Policy
- **JAPI - Airport**
- Challenges
- Way forward

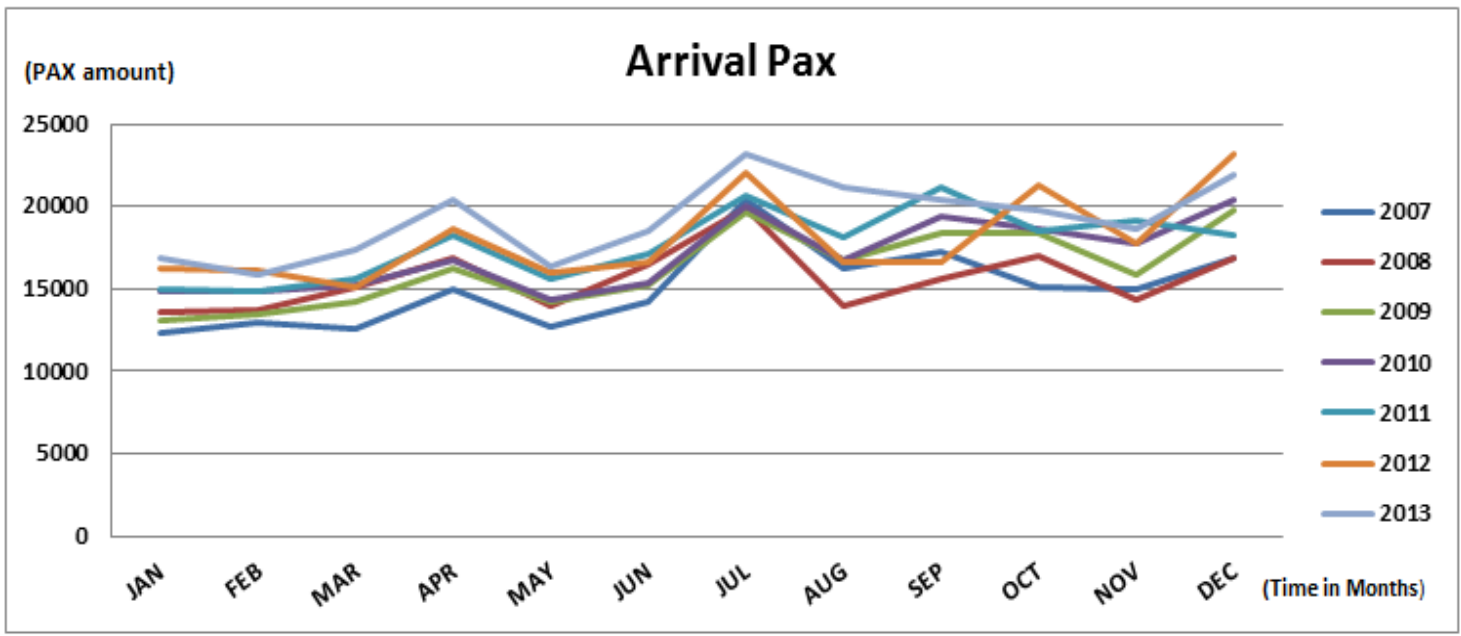
YEAR	TO END OF THE YEAR	
	2012	2027
INDEX	(AS STATISTIC)	(PREDICTED)
PASSENGER THROUGHPUT	<b>434,000</b>	<b>867,000</b>
CARGO ( T )	9,623	20,392
MOVEMENT	4,118	8,405
PEAK HOUR PASSENGER	428	564





# Arrival Peak

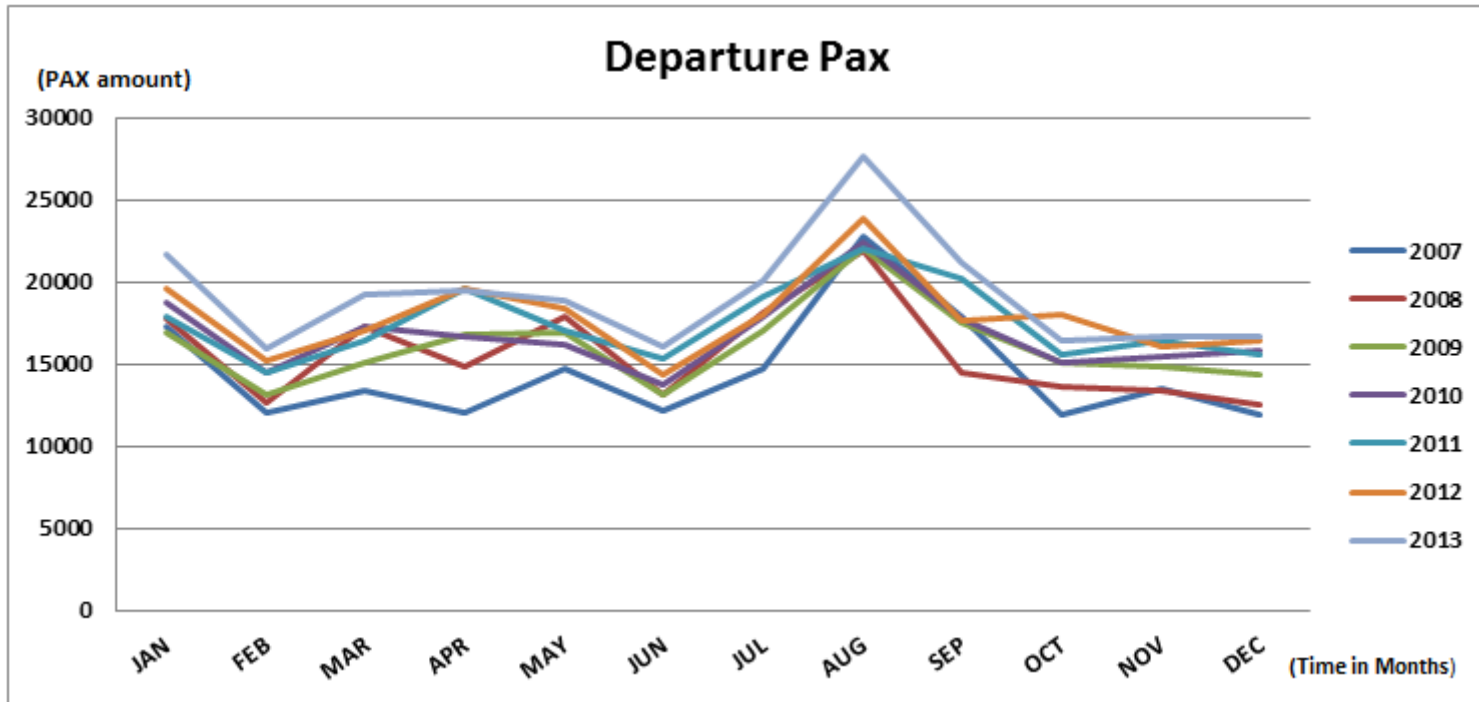
- Suriname
- Aviation Policy
- **JAPI - Airport**
- Challenges
- Way forward





# Departure Peak

- Suriname
- Aviation Policy
- **JAPI - Airport**
- Challenges
- Way forward







# Challenges in General

- Suriname
- Aviation Policy
- JAPI - Airport
- **Challenges**
- Way forward

- Small population
- Limited connections
- Tourism board
- No typical white sand, blue water beaches
- Security and ICAO Standards
- Infrastructure R.O.I.
- Low pax & cargo traffic





# Integration in South America

- Suriname
- Aviation Policy
- JAPI - Airport
- **Challenges**
- Way forward

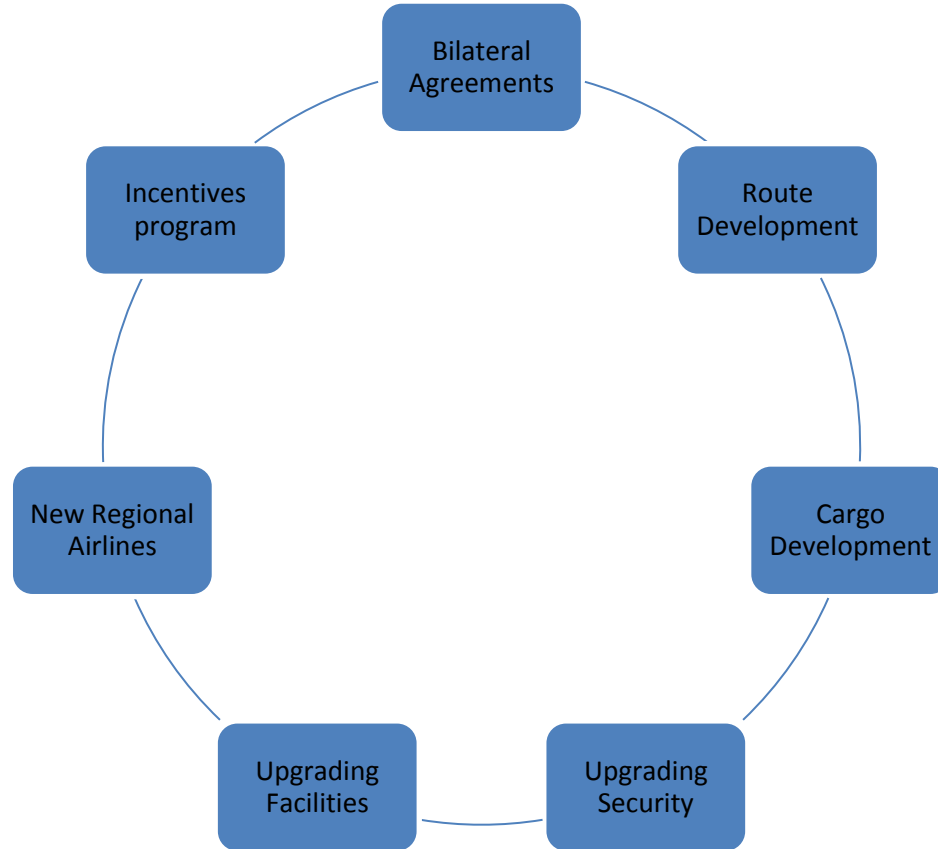
- Language
  - Customer Service, interest
- No Historical connection
- Limited connections (GEO, CAY, BEL)
- Bilateral agreements





# Focus Area's

- Suriname
- Aviation Policy
- JAPI - Airport
- Challenges
- **Way forward**





# What do we offer?

- Suriname
- Aviation Policy
- JAPI - Airport
- Challenges
- **Way forward**

- Eco Tourism
- Infrastructure & Capacity
- 24/7 - no slot (congestion) restrictions
- Fueling stop
- Cargo possibilities
- Partnership–Suriname Airways
  - CARICOM market
  - Air-Link between the Guyana's
  - Link to Europe – Amsterdam
- Altitude restrictions - Cargo Payload - fueling

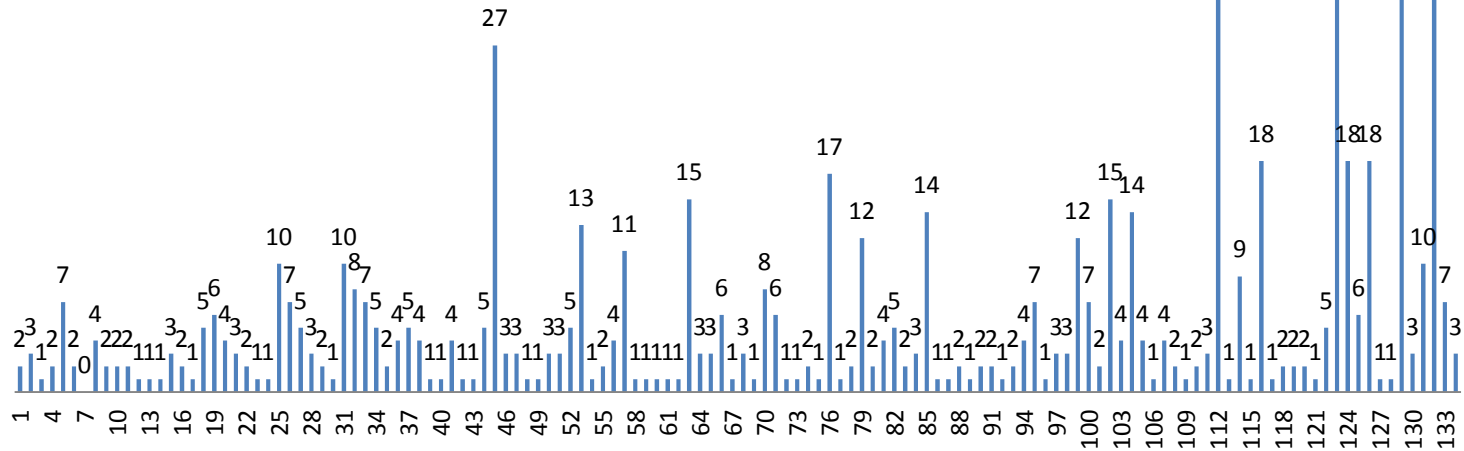




# Improved Connections

- Suriname
- Aviation Policy
- JAPI - Airport
- Challenges
- **Way forward**

Transfers:  
 CAY, GEO, BEL  
 AUA, CUR, MIA, POS  
 via PBM





Air Integration

Suriname  
South America

# Route Development

- Suriname
- Aviation Policy
- JAPI - Airport
- Challenges
- Way forward

Top 20 Routes from PBM - RYTD Mar 2013

Dest	Dest Country	O&D		O&D Total	via PBM		Total
		Local	Beyond		Behind	Bridge	
AMS	Netherlands	219,319	732	220,051	52		220,103
MIA	United States	34,449	16,787	51,236	14	6	51,256
CUR	Netherlands Antilles	46,956	88	47,044	17		47,061
BEL	Brazil	33,063	660	33,723	133	9	33,865
POS	Trinidad & Tobago	29,603	150	29,753	87	44	29,884
AUA	Aruba	12,527	5,797	18,324	2	21	18,347
QYI	Netherlands	15,449		15,449			15,449
CAY	French Guiana	7,812		7,812	196	19	8,027
PVG	China		4,536	4,536			4,536
HKG	Hong Kong		4,469	4,469			4,469
GEO	Guyana	3,714	258	3,972	125	9	4,106
JFK	United States		3,946	3,946			3,946
SXM	Netherlands Antilles		2,999	2,999			2,999
SDQ	Dominican Republic		2,909	2,909			2,909
KIN	Jamaica		2,799	2,799			2,799
BGI	Barbados		1,952	1,952			1,952
YYZ	Canada		1,852	1,852			1,852
HGH	China		1,535	1,535			1,535
YUL	Canada		1,371	1,371			1,371
XMN	China		1,332	1,332			1,332
Other		0	20,252	20,252	0	30	20,282
<b>Total</b>		<b>402,892</b>	<b>74,424</b>	<b>477,316</b>	<b>626</b>	<b>138</b>	<b>478,080</b>

Top 20 Unserviced Routes from PBM - RYTD Mar 2013

Dest	Dest Country	O&D Beyond
PVG	China	4,536
HKG	Hong Kong	4,469
JFK	United States	3,946
SXM	Netherlands Antilles	2,999
SDQ	Dominican Republic	2,909
KIN	Jamaica	2,799
BGI	Barbados	1,952
YYZ	Canada	1,852
HGH	China	1,535
YUL	Canada	1,371
XMN	China	1,332
PEK	China	1,304
BON	Netherlands Antilles	1,152
PAP	Haiti	1,010
MNL	Philippines	697
CCS	Venezuela	630
DEL	India	591
FCO	Italy	545
LIN	Italy	536
SLU	St. Lucia	483
IST	Turkey	471

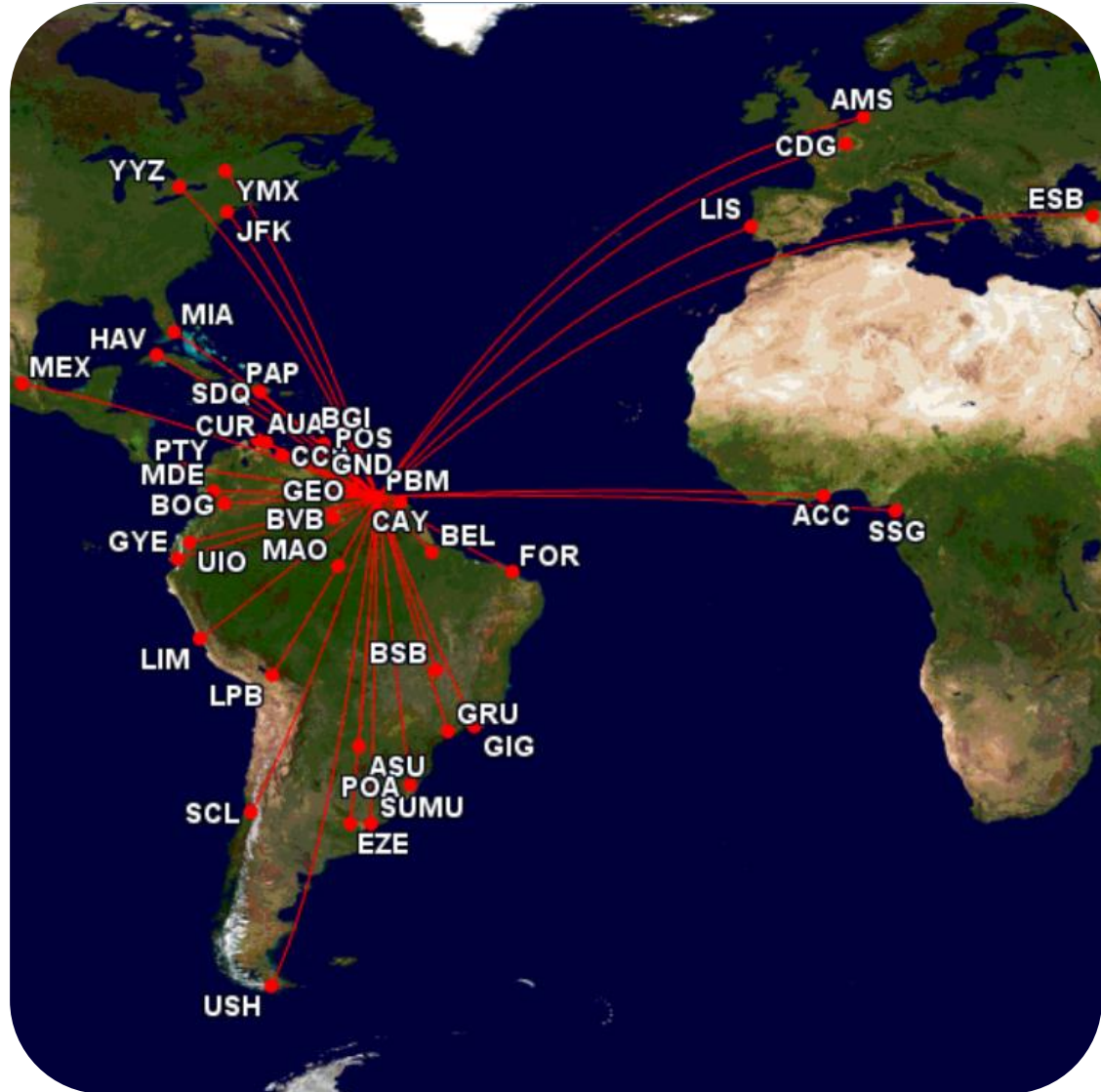






# Gateway into the Caribbean

- Suriname
- Aviation Policy
- JAPI - Airport
- Challenges
- **Way forward**





# To conclude

- Suriname
- Aviation Policy
- JAPI - Airport
- Challenges
- **Way forward**

- How much more can we connect the North of Brazil beyond?
- Will LCC's boast traffic in this region?
- Can we play a role in Freight distribution?
  - UNASUR, MERCOSUR, CARICOM, CELAC, EU







Muito obrigado

